

SCHOOL FUNDING EXPLAINED: PART 1



One of the most frequently asked questions I've received in my tenure as a school district treasurer is: why are school districts always on the ballot asking for more money? While it may seem like a straight-forward question, the answer is anything but simple. My goal is to simplify school district funding into its two major components: local tax revenue and state funding.

In this article, I will focus on local tax revenue.

First, when a school district is on the ballot, it is not always for new money. Often times, a district is asking for a renewal levy, which is not an increase in taxes. Having said that, it is important to understand that it is built into the system for funding schools that a district will eventually be back on the ballot for new monies.

A school district collects a large share of its revenue from local property taxes. If you own property, you pay taxes on the value of your home, land, and any other real estate that you may own. The problem that a school district has when it comes to local property tax, is that **there is no growth in revenue** as property values increase.

The county performs a reappraisal of property values every three years. Back in 1976, the state legislature

passed a law, HB 920, which does not allow taxes to increase when property values increase. For example, let's take a property worth \$150,000 and use a tax levy of 6 mills. That property with that millage will generate \$315 in tax revenue. Now let's say that at the county's next reappraisal that property is now valued at \$160,000. What HB 920 does is reduces the levy millage from 6 mills to 5.625 mills to generate the same \$315 in taxes. This adjustment occurs every three years and the millage is adjusted each time so that the taxes on that property will always be \$315 even if the property were to double in value.

So, when a school district passes a levy, it is always going to generate the **same tax on the same property as the day it was passed**. Since revenue on levies are not allowed to grow along with the increase in property values, the tax levy will eventually become insufficient, and an additional levy will be needed.

Unfortunately, many school districts rely heavily on local tax revenue as they do not receive much funding from the state of Ohio. I will address the issue of state funding in the next newsletter.

Thank you,
Jeff Hostetler
Treasurer
Tallmadge City Schools

As you read this and future newsletter articles from my office, please feel free to contact me with comments or questions about Tallmadge Schools' finances at:

hostetler.jeff@tallmadgeschools.org



TRADITION VISION EXCELLENCE

TALLMADGE CITY SCHOOLS
AUGUST 2017

PAGE 2

BUILDING PROGRAM UPDATE
TALLMADGE CITY SCHOOL
DISTRICT LAUNCHES NEW
WEBSITE

PAGE 3

DISTRICT ATTENDANCE
INTERVENTION PROGRAM
POSITIONS STUDENTS FOR
SUCCESS
NUTRITION SERVICES UPDATE
SIGN UP FOR OUR
E-NEWSLETTER!

PAGE 4

SCHOOL FUNDING EXPLAINED:
PART 1

SUPERINTENDENT'S MESSAGE



At Tallmadge High School, we are working hard to prepare every student to graduate with one of the three Es: to be enrolled, enlisted or employed. We will continue to focus on providing students with the opportunities and tools to discover the path that's right for them.

Welcome back!

The 2017-2018 school year is off to a great start. This year, we have a lot to be excited about.

At the middle and elementary school levels, we are preparing our students to move into 21st-century-focused buildings. At the middle school, we have converted the old media center into a 21st-century learning suite. The learning suite will teach students skills and opportunities to be prepared for high school, college and the work force. We are working on creating a similar space for students in grades K-5. The goal is for teachers and students to be familiar with working in a learning suite, as these will be the heart of the new K-5 building and the new middle school building.

At Tallmadge High School, we are working hard to prepare every student to graduate with one of the three Es: to be enrolled, enlisted or employed. We will continue to focus on providing students with the opportunities and tools to discover the path that's right for them.

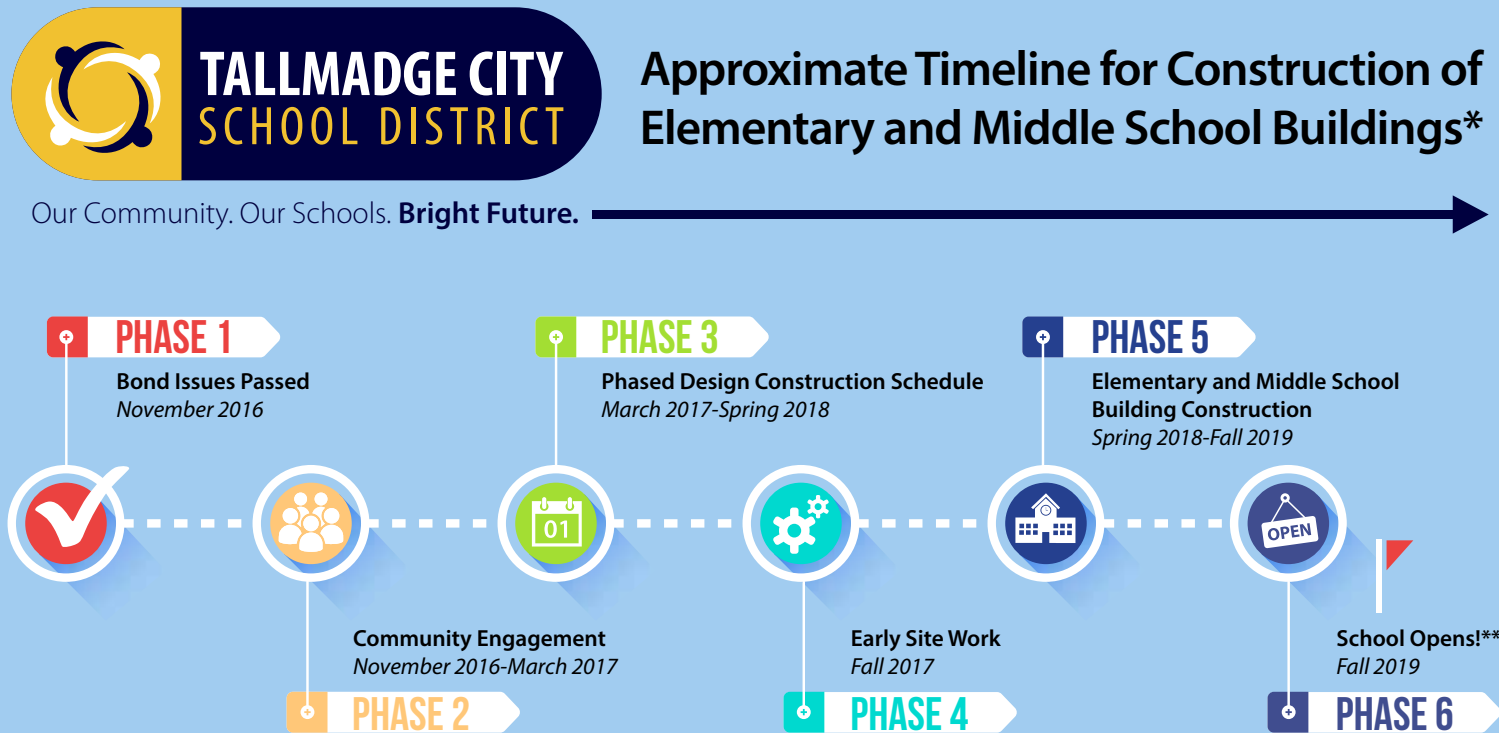
As we kick-off the school year, I encourage parents and community members to get involved. We have numerous volunteer opportunities in our buildings. If you're interested, contact your child's school building office for more information. If you're unable to volunteer, I encourage you to attend our students' events and support their hard work.

THE 2017-2018 SCHOOL YEAR IS GOING TO BE A GREAT ONE FOR TALLMADGE!

Jeff Ferguson
Superintendent
Tallmadge City Schools

BUILDING PROGRAM UPDATE

The design and development phase for the new elementary and new middle school is well underway. We have submitted preliminary work to the city's planning and zoning department. If all goes well, we should be able to break ground in November. This fall, we will also begin the design and development phase for the athletic complex.



*Timetable may overlap and be altered as necessity dictates.

**Building openings may have to be phased, with the middle school opening in August and the elementary school opening mid-year.

For additional details, visit www.tallmadgeschools.org.

TALLMADGE CITY SCHOOL DISTRICT LAUNCHES NEW WEBSITE

If you haven't already, check out the new district website, which launched over the summer. In addition to a new and more user-friendly design, there are several new elements to the site. The site now includes Twitter feeds from the superintendent and building principals. There is also a Parent Portal that allows parents to create an account and view important information about

their students, such as schedules and Gradebooks. From the Portal, parents can edit emergency contact information, medical information and other forms.

The new website also includes a single, cohesive district calendar that includes athletic and academic events. Students can access their emails,

Google Classroom and ProgressBook directly from the homepage. EZpay is easily accessible, allowing parents to add money to their child's account.

The new website allows parents, students and district staff to have all the information they need about Tallmadge Schools right at their fingertips!

DISTRICT ATTENDANCE INTERVENTION PROGRAM POSITIONS STUDENTS FOR SUCCESS

Regular school attendance is important to our students' academic success and it is our goal to help our students succeed. Students who are missing school are missing out on valuable growth and learning experiences. We want to ensure all of our students are getting the support they need in order to master the skills they need to graduate prepared for higher education or the workforce. In order to provide our students with a solid foundation to succeed, we have developed an Attendance Intervention Plan for the district.

We understand there may be barriers that cause students to be absent. Sometimes these barriers are outside of the student's control. This is why we are committed to working with students and their families to identify and overcome these obstacles.

Ohio law states if a student is absent with or without legitimate excuse from school 38 or more hours in one school month, or 65 or more hours in a school year, the school will notify the student's guardian of the child's absence. If the student surpasses this number of absences, the district will assign the student to an absence intervention team in order to develop an intervention plan for the student's success.

Attendance Intervention Plans may be unique for individual situations, and may utilize the following strategies:

- **Counseling**
- **Parent education or parenting programs**
- **Mediation**
- **Programming available through juvenile authorities**
- **Referral for truancy if needed**

We find our students can reach their goals when they are engaged and learning in the classroom. Through our Attendance Intervention Program, we hope to set them up for success in their future endeavors.

NUTRITION SERVICES UPDATE

Last school year, the cafeteria at Tallmadge High School was transformed into the Blue Devil's Café, with signage and additions that enhance the student breakfast and lunch experience. New menu signage allows for easy way finding and promotes more of a food-court style dining environment.

All of the new signage in the cafeteria, serving line and snack bar promotes healthy eating and makes it easy for students to make healthy choices. It also transforms the typical school meal experience into one where students have choices in what they eat every day for breakfast and lunch.

My School Menus

Download the My School Menus app today! The FREE app shows the menus and items offered at your child's school. You can filter out menu items by allergens, see detailed nutrition information and find the prices for each school menu.

Search "My School Menus" in the App Store or on Google Play. You can get the same information by visiting the district website at www.tallmadgeschools.org and clicking on Nutrition Services under Departments.



SIGN UP FOR OUR E-NEWSLETTER!

Visit www.tallmadgeschools.org/TCSeNewsletter.aspx and sign up for the district's e-newsletter! You'll receive bi-monthly updates on important happenings within the district, including building updates, financial information, Tallmadge in the News and more!

